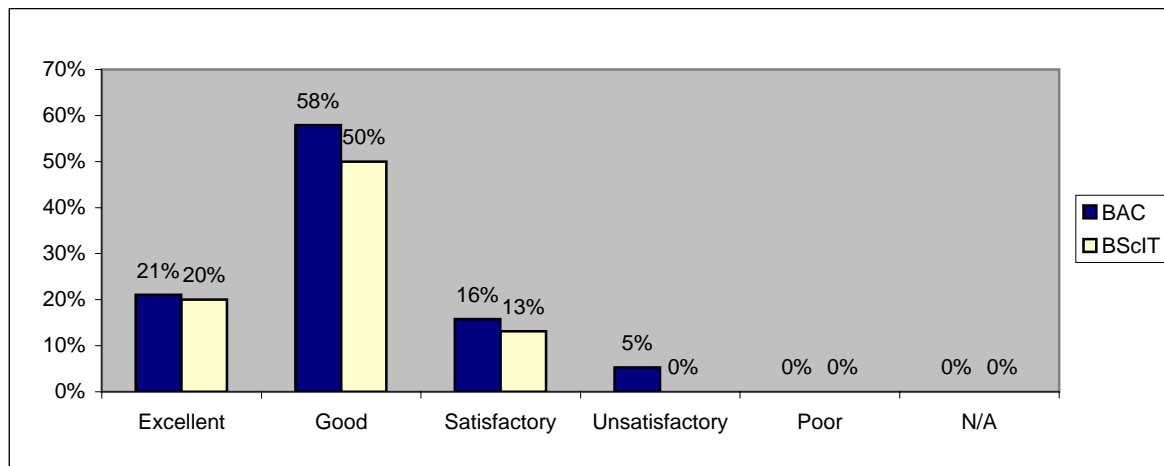


## Placement Employer Survey (2003-04)

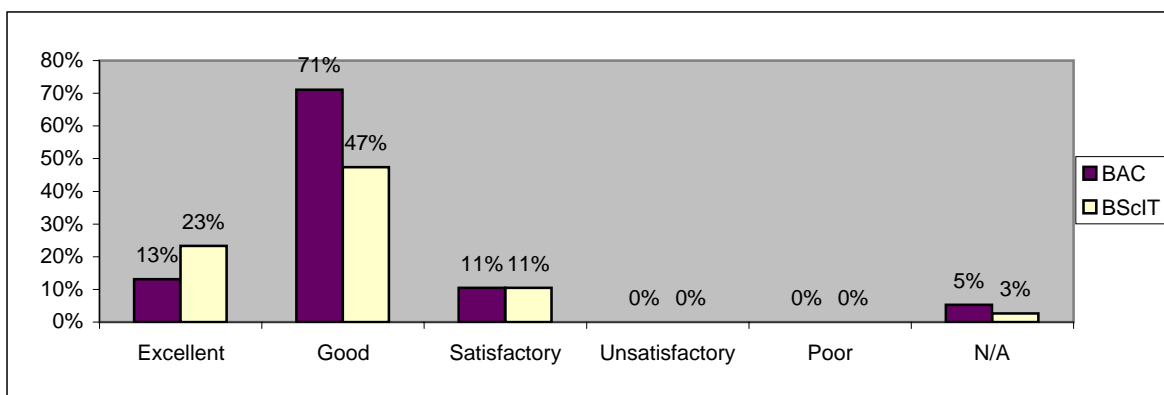
Placement student's performance : Punctuality

	BAC	BScIT
Excellent	21%	20%
Good	58%	50%
Satisfactory	16%	13%
Unsatisfactory	5%	0%
Poor	0%	0%
N/A	0%	0%



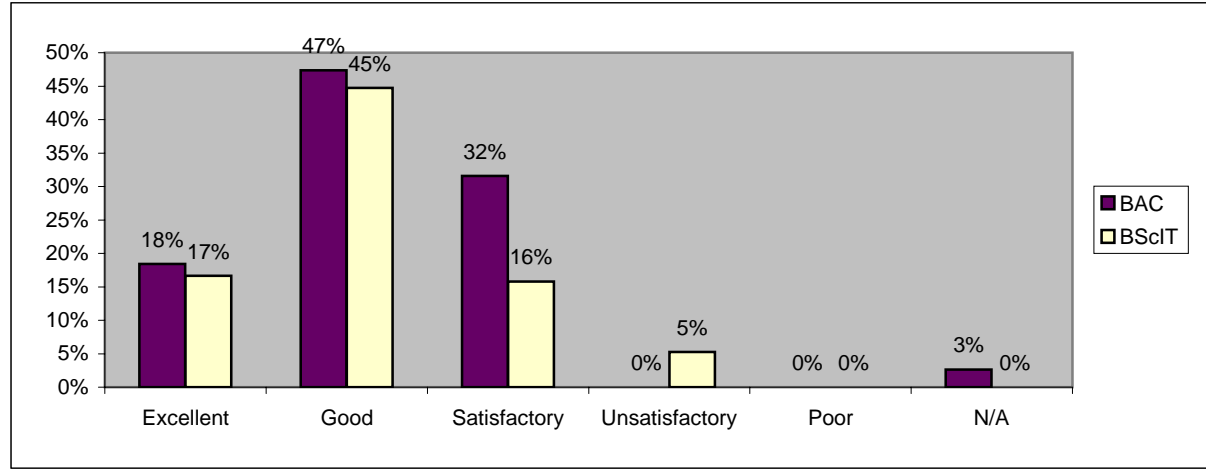
Placement student's performance : Programming skill (if applicable)

	BAC	BScIT
Excellent	13%	23%
Good	71%	47%
Satisfactory	11%	11%
Unsatisfactory	0%	0%
Poor	0%	0%
N/A	5%	3%



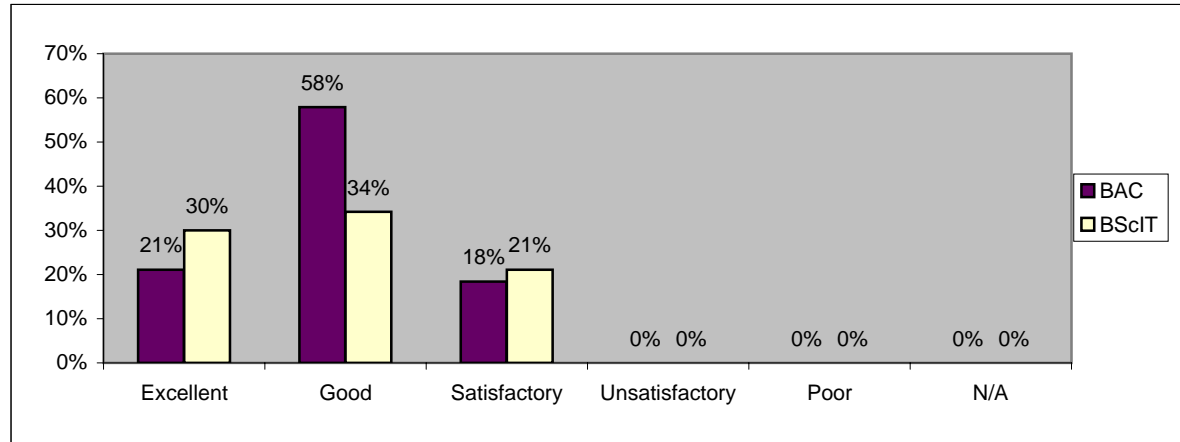
Placement student's performance : Problem solving skill

	BAC	BScIT
Excellent	18%	17%
Good	47%	45%
Satisfactory	32%	16%
Unsatisfactory	0%	5%
Poor	0%	0%
N/A	3%	0%



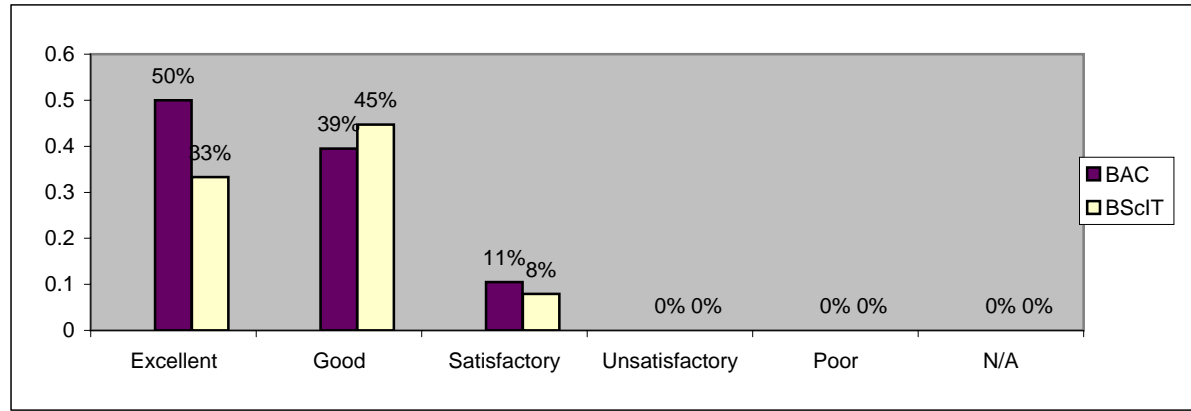
Placement student's performance : Technical knowledge

	BAC	BScIT
Excellent	21%	30%
Good	58%	34%
Satisfactory	18%	21%
Unsatisfactory	0%	0%
Poor	0%	0%
N/A	0%	0%



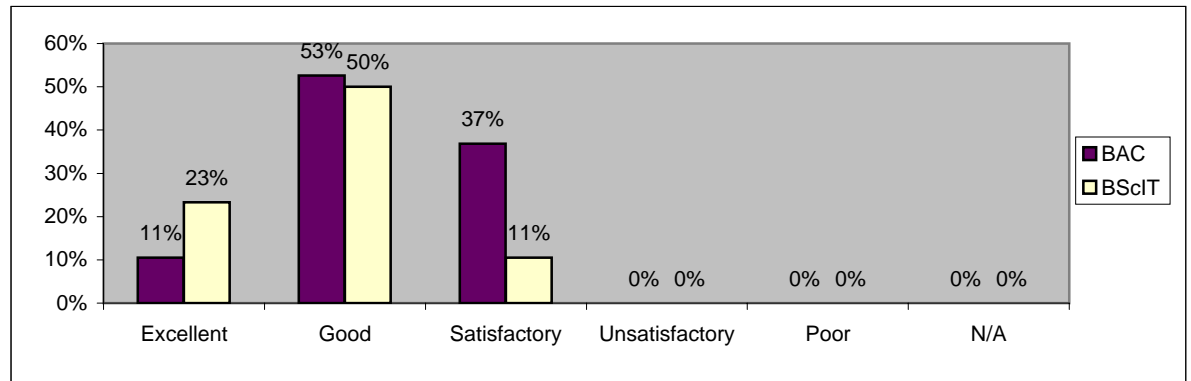
Placement student's performance : Self learning ability

	BAC	BScIT
Excellent	50%	33%
Good	39%	45%
Satisfactory	11%	8%
Unsatisfactory	0%	0%
Poor	0%	0%
N/A	0%	0%



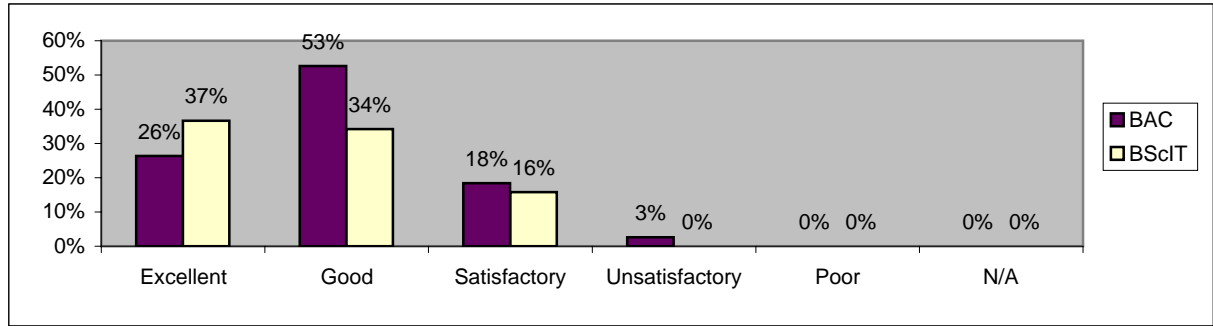
Placement student's performance : Communication skill

	BAC	BScIT
Excellent	11%	23%
Good	53%	50%
Satisfactory	37%	11%
Unsatisfactory	0%	0%
Poor	0%	0%
N/A	0%	0%



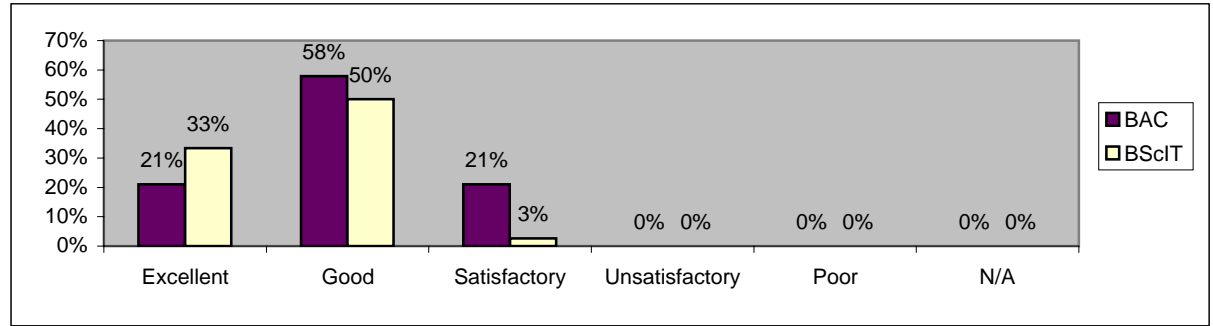
Placement student's performance : Taking initiative

	BAC	BScIT
Excellent	26%	37%
Good	53%	34%
Satisfactory	18%	16%
Unsatisfactory	3%	0%
Poor	0%	0%
N/A	0%	0%



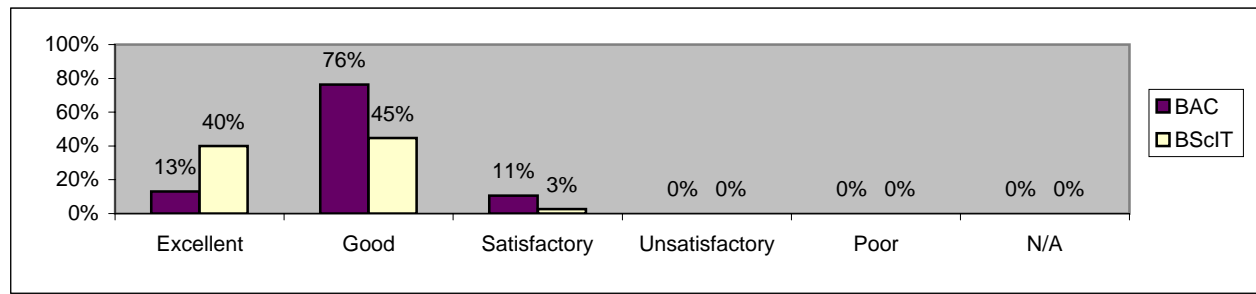
Placement student's performance : Relating to the supervisors

	BAC	BScIT
Excellent	21%	33%
Good	58%	50%
Satisfactory	21%	3%
Unsatisfactory	0%	0%
Poor	0%	0%
N/A	0%	0%



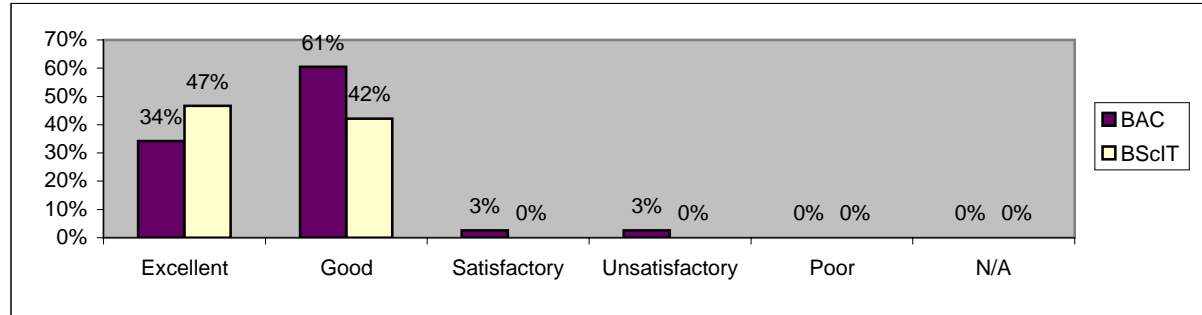
Placement student's performance : Relating to the peers

	BAC	BScIT
Excellent	13%	40%
Good	76%	45%
Satisfactory	11%	3%
Unsatisfactory	0%	0%
Poor	0%	0%
N/A	0%	0%



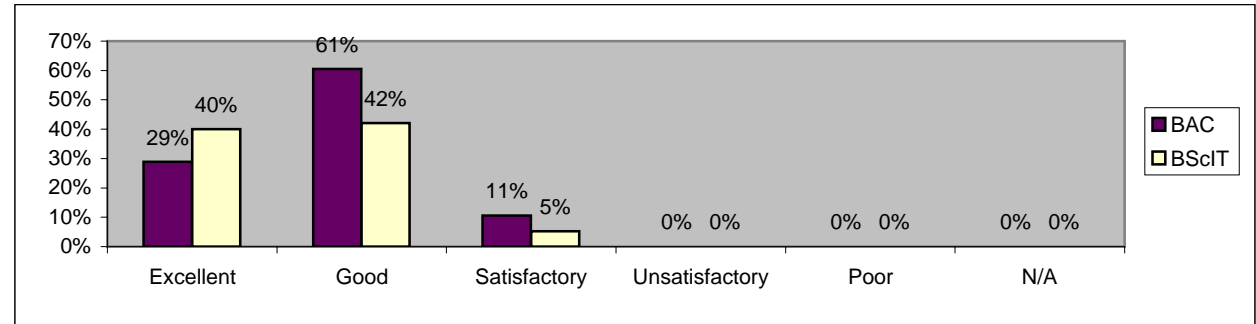
Placement student's performance : Working attitude

	BAC	BScIT
Excellent	34%	47%
Good	61%	42%
Satisfactory	3%	0%
Unsatisfactory	3%	0%
Poor	0%	0%
N/A	0%	0%



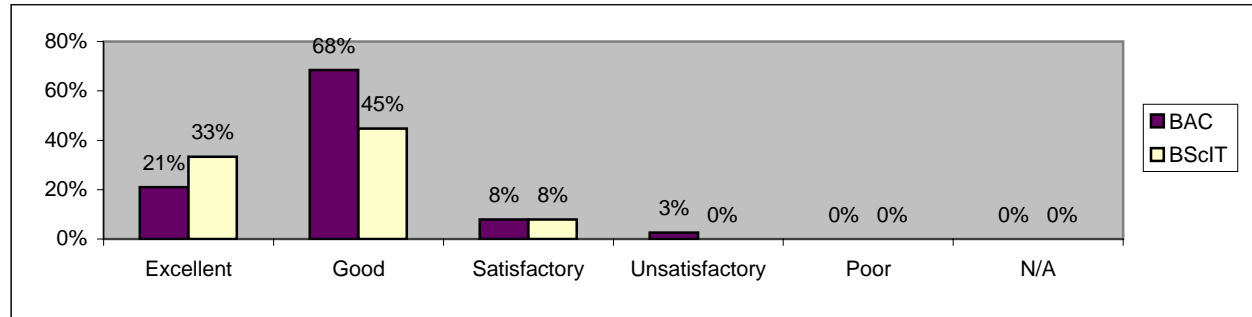
Placement student's performance : Trustworthiness

	BAC	BScIT
Excellent	29%	40%
Good	61%	42%
Satisfactory	11%	5%
Unsatisfactory	0%	0%
Poor	0%	0%
N/A	0%	0%



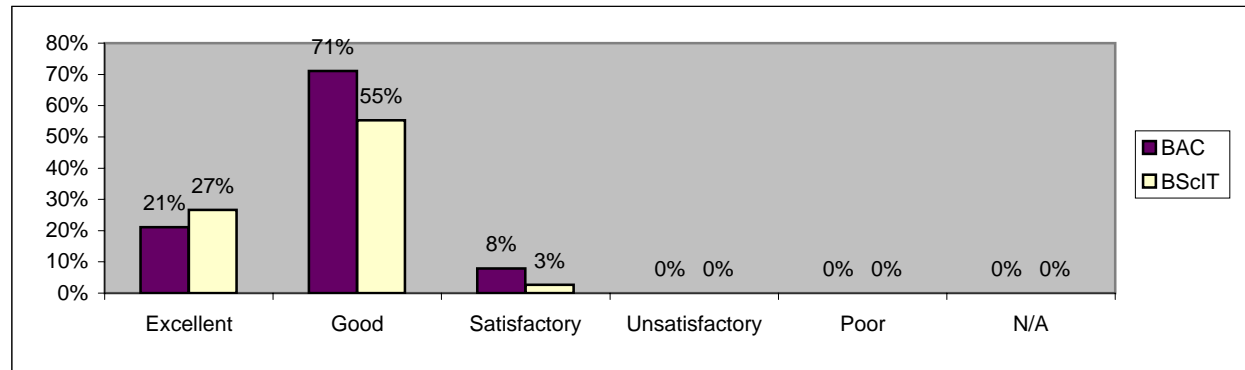
Placement student's performance : Quality of work performed

	BAC	BScIT
Excellent	21%	33%
Good	68%	45%
Satisfactory	8%	8%
Unsatisfactory	3%	0%
Poor	0%	0%
N/A	0%	0%



Placement student's performance : Overall

	BAC	BScIT
Excellent	21%	27%
Good	71%	55%
Satisfactory	8%	3%
Unsatisfactory	0%	0%
Poor	0%	0%
N/A	0%	0%



16 Students are nominated by their employer for Outstanding Placement Student Awards.